



TECHNICAL SPECIFICATIONS

ELITE PROGRAM BY FRANCESC RIFÉ

Fecha 07.05.2026

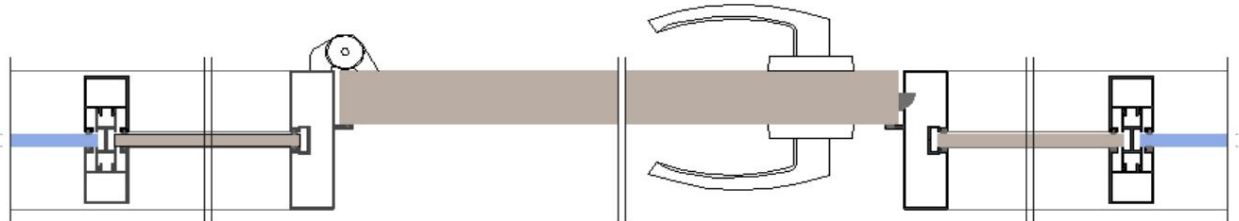
COLOR PANELS	SMOOTH LAMINATES:	02-MLSB	WHITE MATTE TEXT
		02-MLSG3	GRAY MATTE TEXT
	WOOD LAMINATE:	02-MMAHA	WHITE VEINS
		02-MMAR	OAK
ALUMINUM COLOR		08-LA9010M	MATTE WHITE
		08-LA7022M	DARK MATTE GRAY
RUBBER COLOR		04-TR	TRANSPARENT
COLUMN OR 90° TURN	WITH VERTICAL STRUCTURE		
	FREE-STANDING VERTICAL STRUCTURE		
	THROUGH R.1000mm CURVE (FOR SINGLE MODEL)		
	GLASS JOINING USING ARROW PROFILE (FOR DUPLO MODEL)		
3-WAY INTERSECTION	WITH VERTICAL STRUCTURE		
	FREE-STANDING VERTICAL STRUCTURE		
UNIQUE MODEL	OPAQUE ZONES	STRUCTURE VERTICAL VIEW	
	GLAZED AREAS	STRUCTURE VERTICAL VIEW	
		FREE-STANDING DESIGN VERTICAL STRUCTURE	
DUPLO MODULE	OPAQUE ZONES	STRUCTURE VERTICAL VIEW	
	GLAZED AREAS	STRUCTURE VERTICAL VIEW	
		FREE-STANDING DESIGN VERTICAL STRUCTURE	
BLIND DOOR HARDWARE	07-MNSEGL	"GLOBE" HANDLE, SILVER GLITTER	
	07-MNSEDH*	"ELITE" SHINE SILVER HANDLE*	
	TOTAL HEIGHT 07-BIPVELB	"ELITE" WHITE PIVOT HINGE	
	07-BIPVELG	"ELITE" PIVOT HINGE GREY	
	WITH SUPERIOR SUPPLEMENT 07-BILABOB	WHITE SURFACE HINGE	
	07-BILABON	BLACK SURFACE HINGE	
GLASS DOOR HARDWARE	07-MNSEGL05	"GLOBE" HANDLE, SILVER GLITTER	
	07-MNSEDH05*	"ELITE" SHINE SILVER HANDLE*	
	TOTAL HEIGHT 07-BIPVEL05B	WHITE "ELITE" PIVOT HINGE	
	07-BIPVEL05G	"ELITE" PIVOT HINGE GREY	
	WITH SUPERIOR SUPPLEMENT 07-BILABO	SIDE HINGE WITH BRIGHT SILVER BUTTON	

(*) OPTIONAL (Please inquire about price and delivery time)

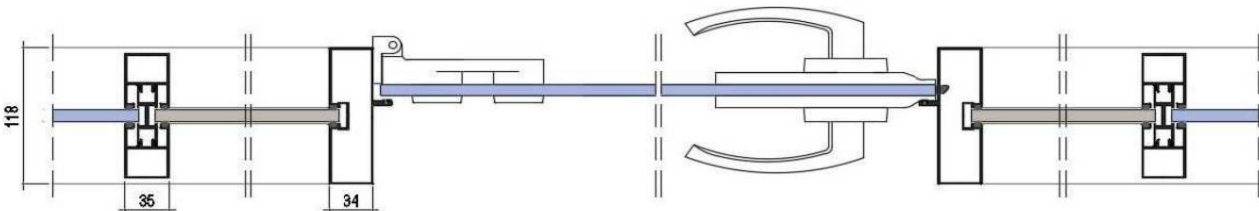
TECHNICAL DETAILS UNIQUE MODEL

Door frames

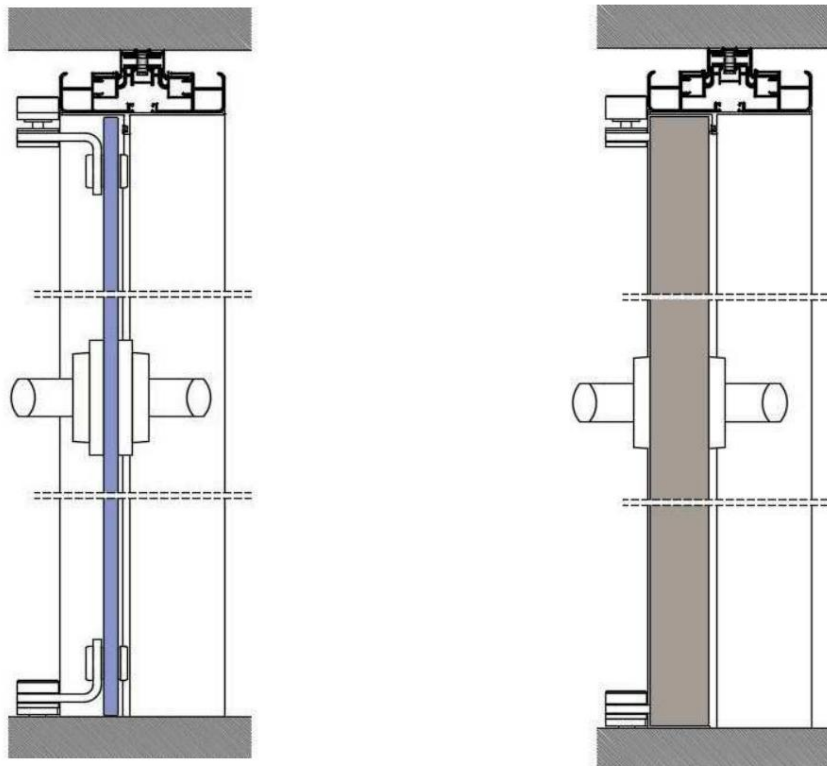
Horizontal section, blind sheet



Horizontal section of glass sheet



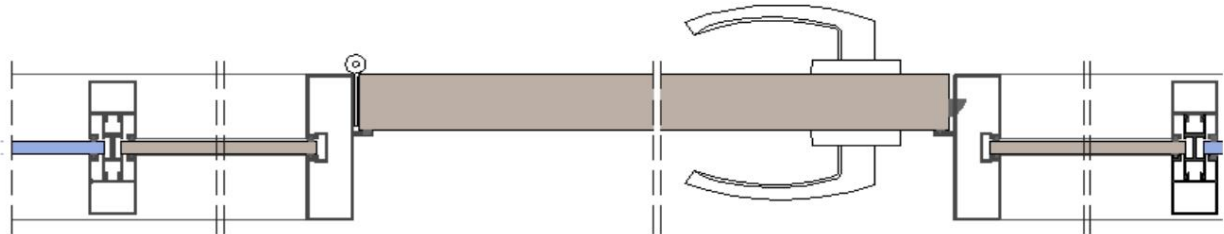
Vertical sections: solid panel and full-height glass (max. h.2800mm)



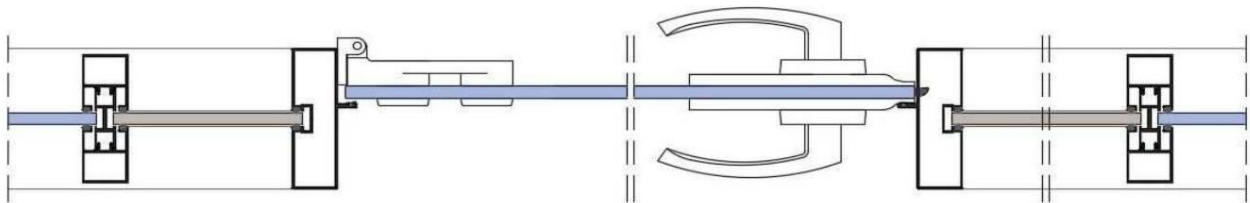
TECHNICAL DETAILS UNIQUE MODEL

Door frames

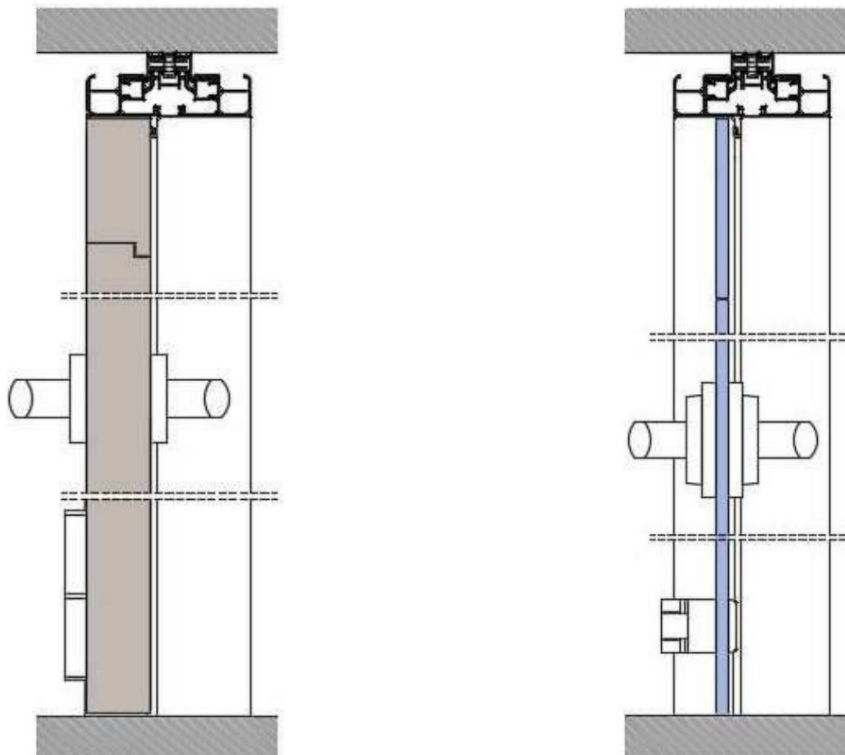
Horizontal section, blind panel with fixed panel



Horizontal section glass panel with fixed panel

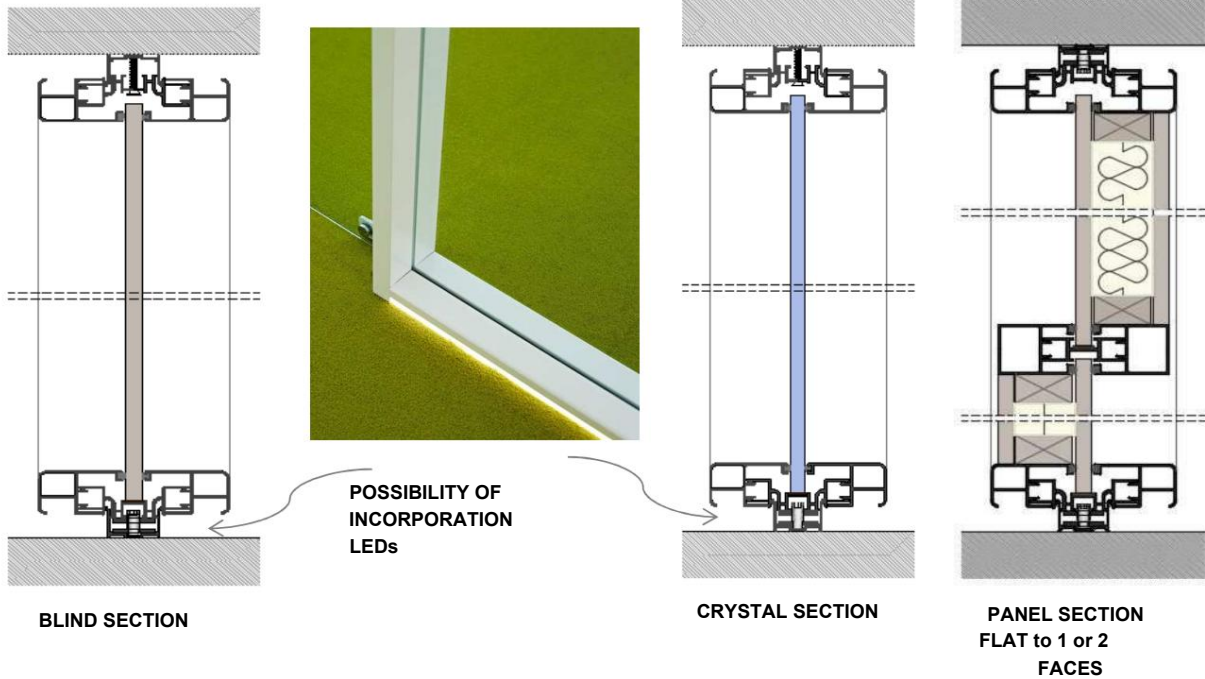


Vertical sections, solid leaf and glass with fixed panel

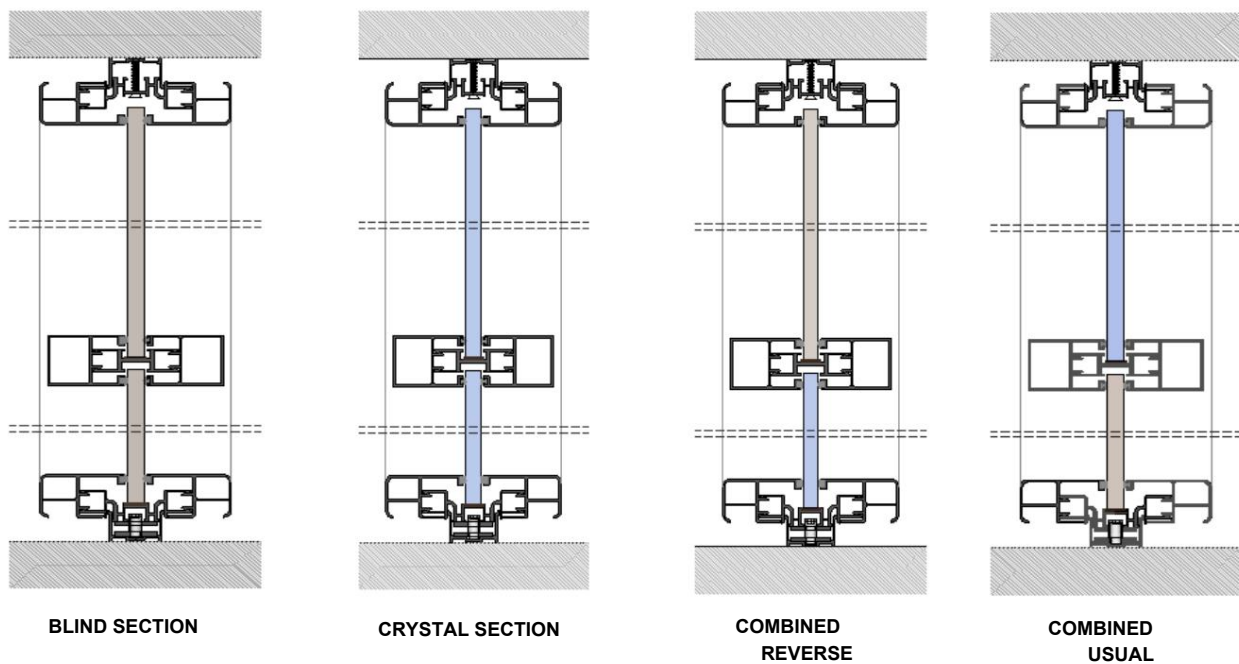


TECHNICAL DETAILS UNIQUE MODEL

Vertical sections from floor to ceiling



Vertical sections with crossbar, height 73.5cm

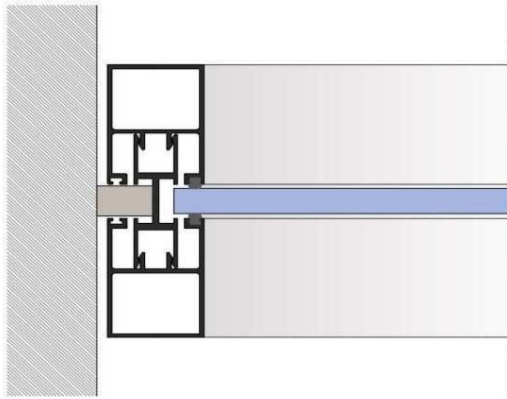


NOTE: Optional replacement of melamine blind areas with translucent or opaque colored glass.

TECHNICAL DETAILS UNIQUE MODEL

Horizontal sections

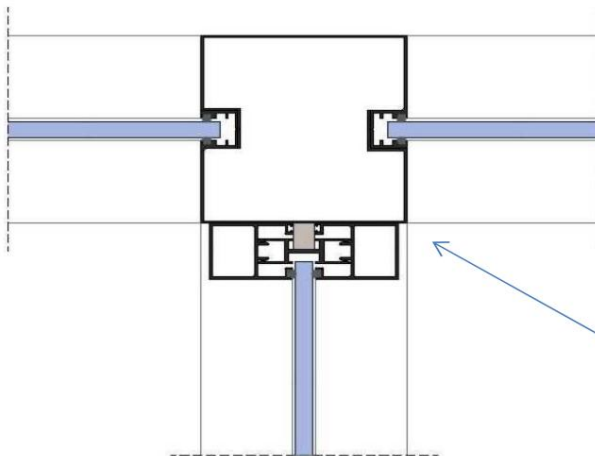
Wall starter stud



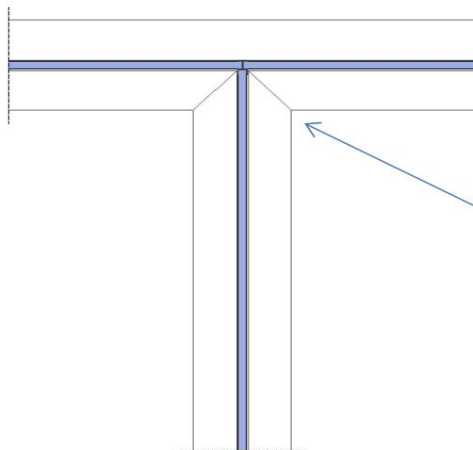
**BLIND MODULES AND
CRYSTAL MODULES**

Sections set

90° - 180° Joints



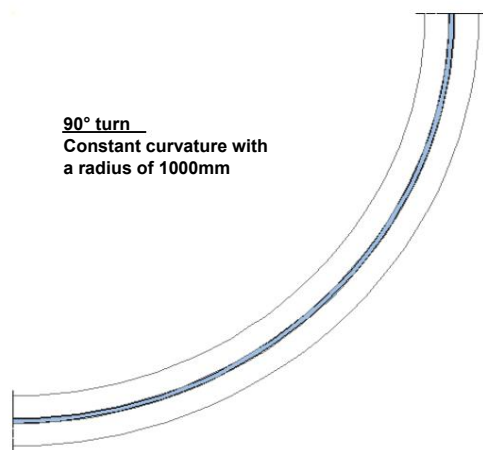
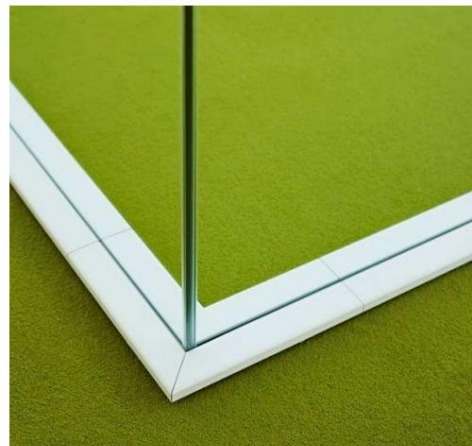
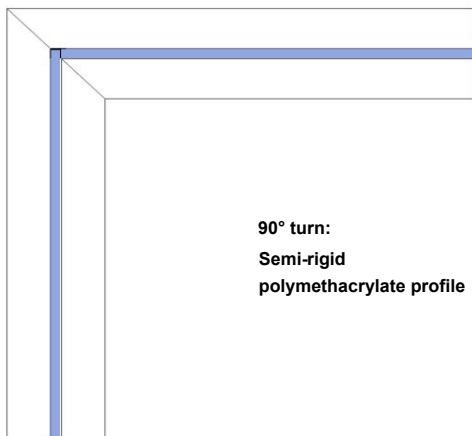
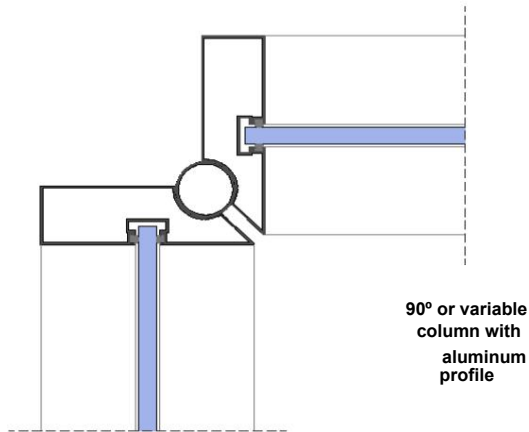
I find three tracks with a vertical
aluminum profile



I find three paths:
Semi-rigid
polymethacrylate profile

TECHNICAL DETAILS UNIQUE MODEL

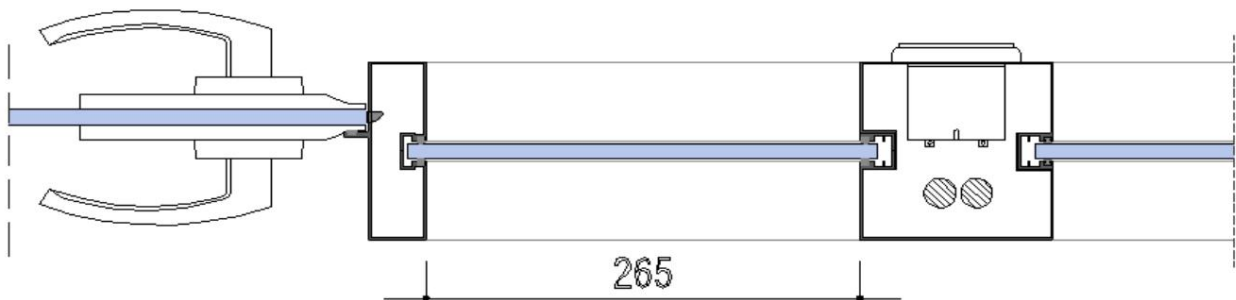
Sections set
90° Joints



TECHNICAL DETAILS UNIQUE MODEL

Sections set
Technical profile

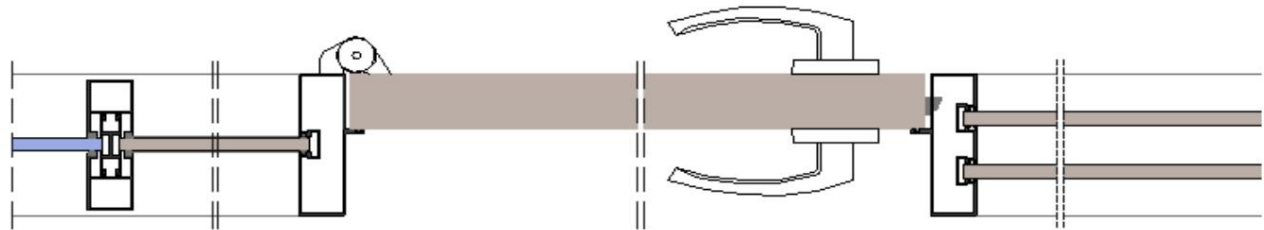
Technical module with a passage door
spaced 265mm apart using glass
or opaque panels



TECHNICAL DETAILS SINGLE and DUPLO MODELS

Sections set

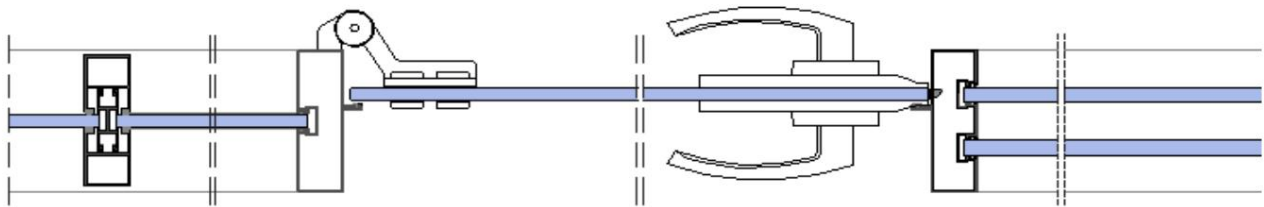
Change of section from SINGLE MODEL to DUPLO MODEL



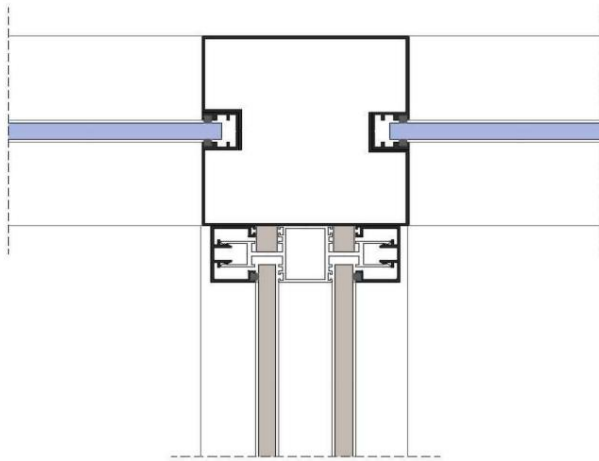
Unique Model

Blind or glass passage door

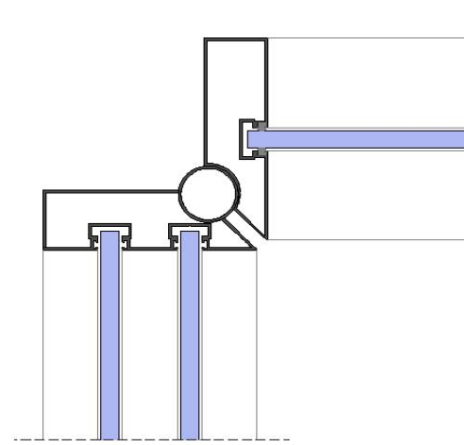
Duplo Model



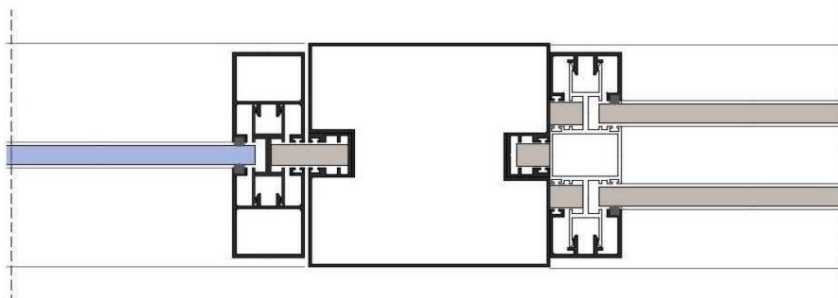
Using a vertical profile



Model change through a three-way meeting



Model change using a 90° column

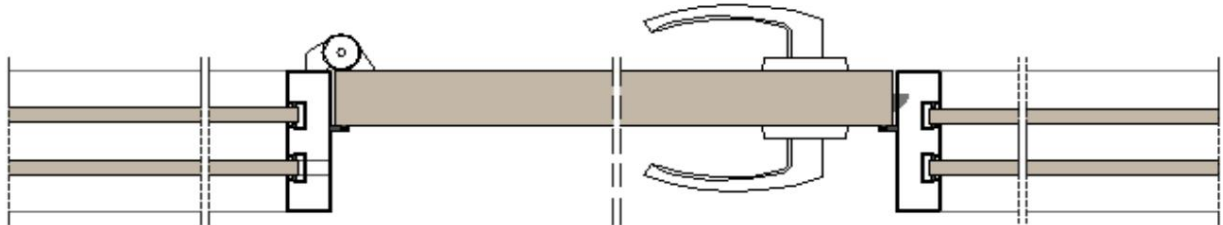


Section change using a 180° vertical profile

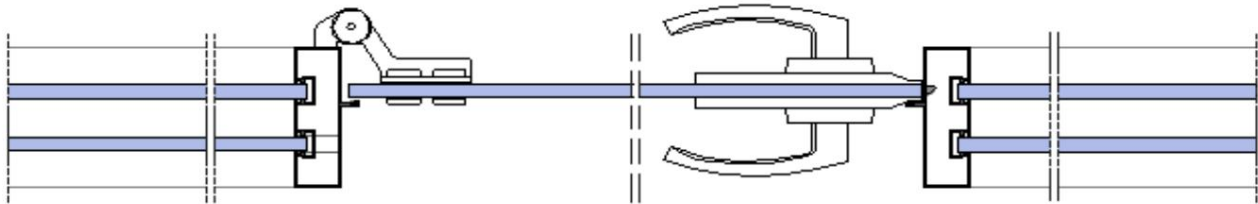
TECHNICAL DETAILS DUPLO MODEL

Door frames

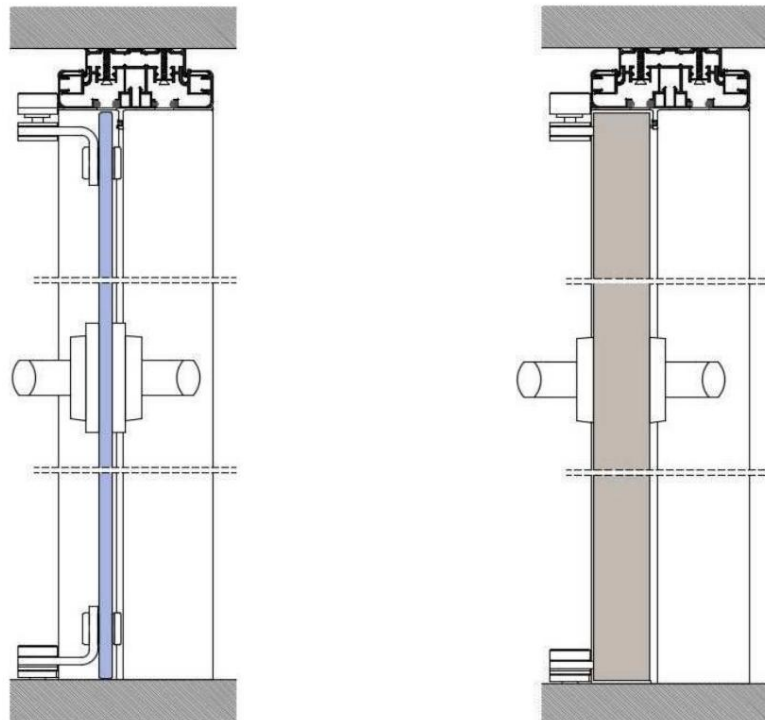
Horizontal section, blind sheet



Horizontal section of glass sheet



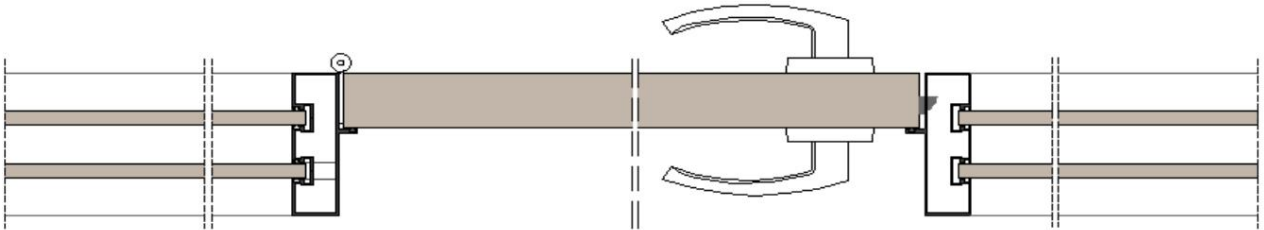
Vertical sections: solid panel and full-height glass (max. h.2800mm)



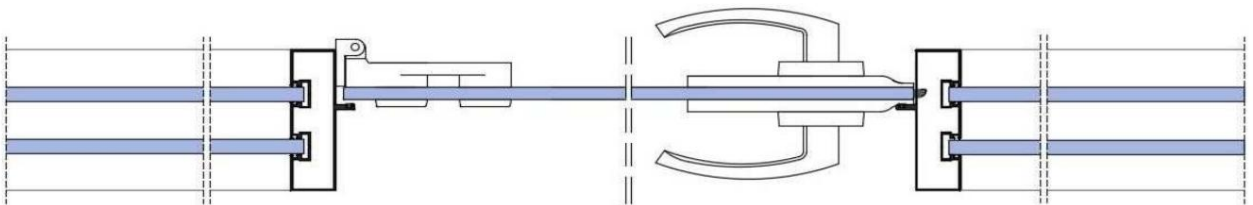
TECHNICAL DETAILS DUPLO MODEL

Door frames

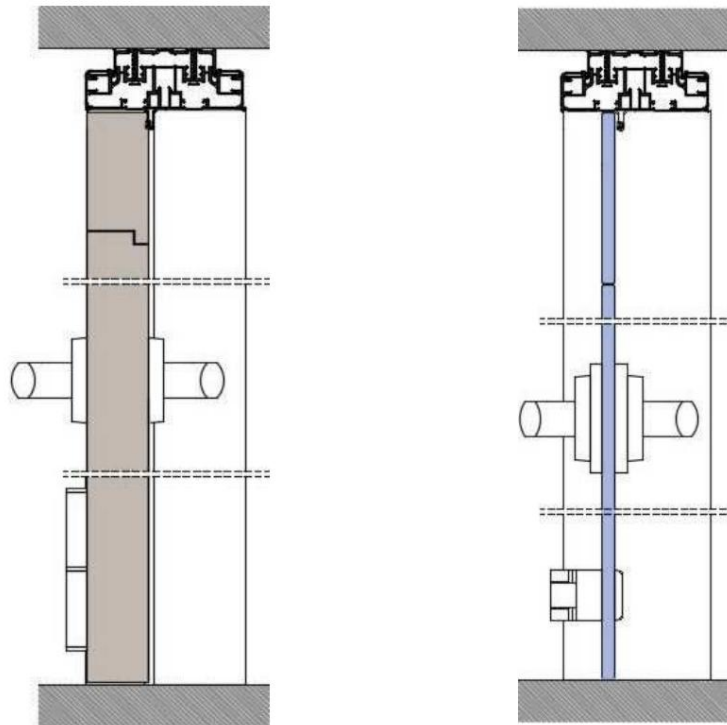
Horizontal section, blind panel with fixed panel



Horizontal section glass panel with fixed panel

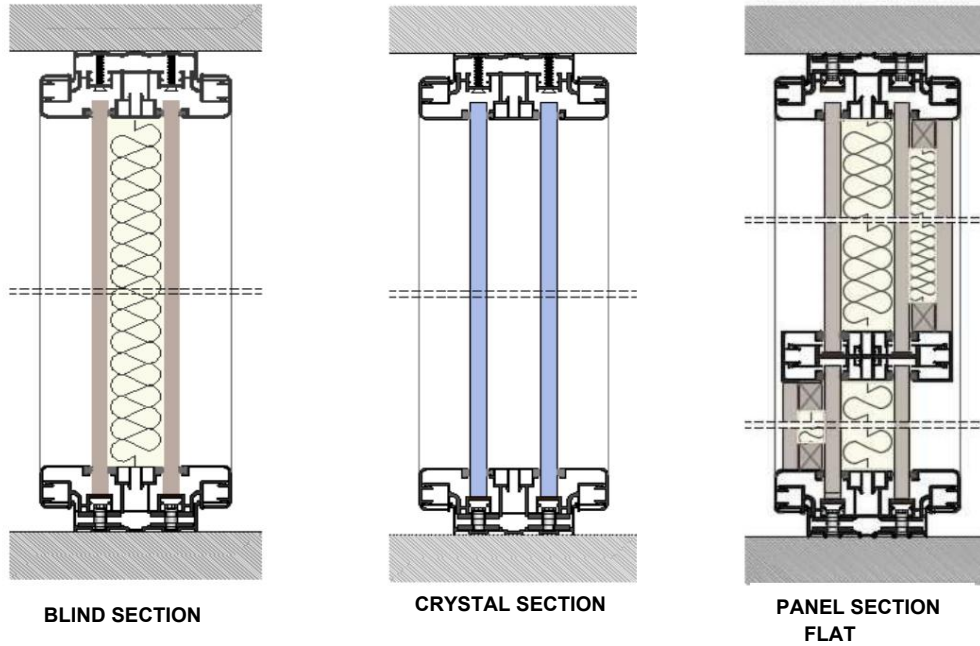


Vertical sections, solid leaf and glass with fixed panel

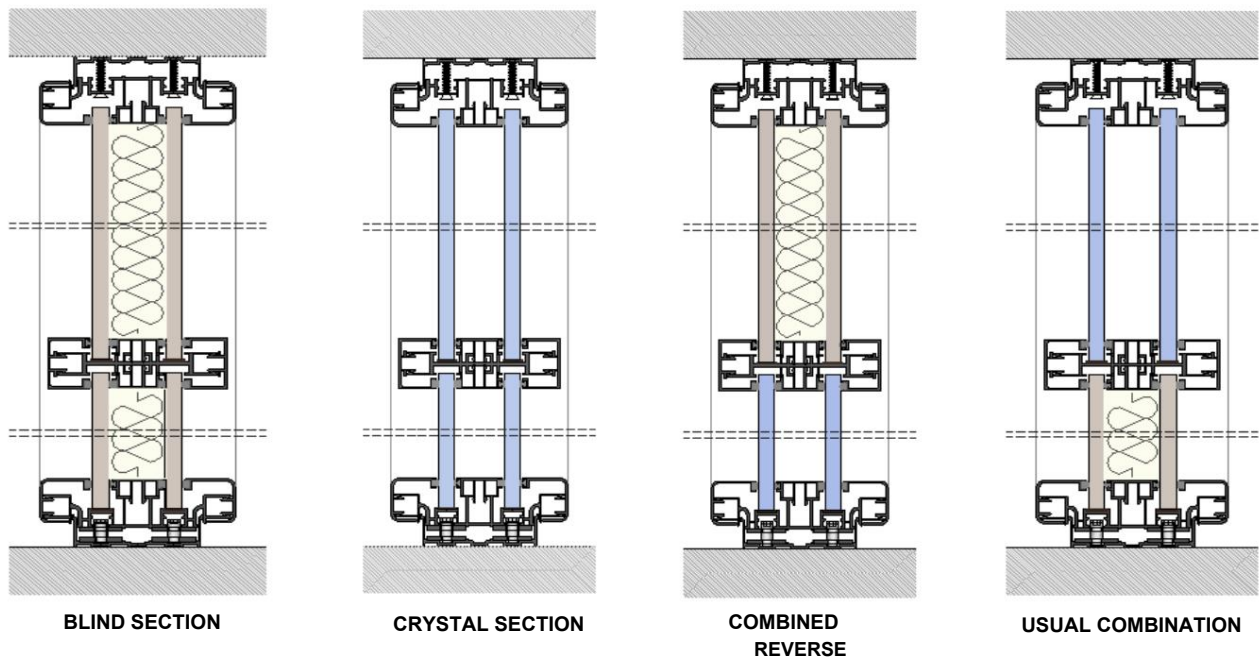


TECHNICAL DETAILS DUPLO MODEL

Vertical sections from floor to ceiling



Vertical sections with crossbar, height 73.5cm

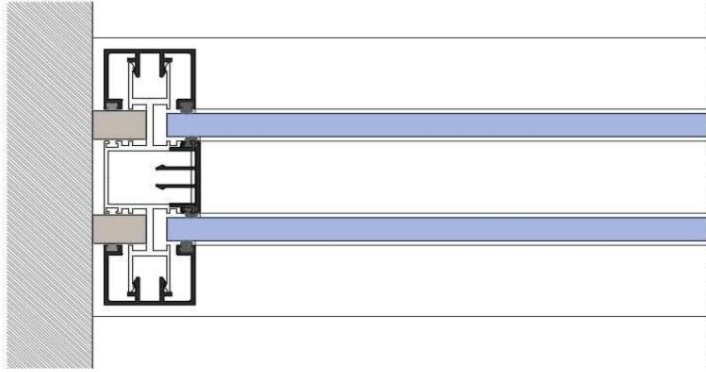


NOTE: Optional replacement of melamine blind areas with translucent or opaque colored glass.

TECHNICAL DETAILS DUPLO MODEL

Horizontal sections

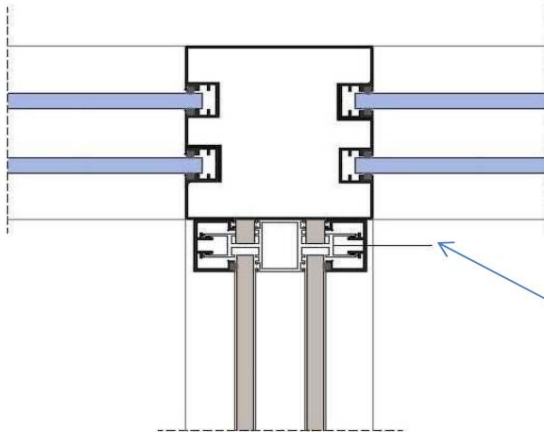
Wall starter stud



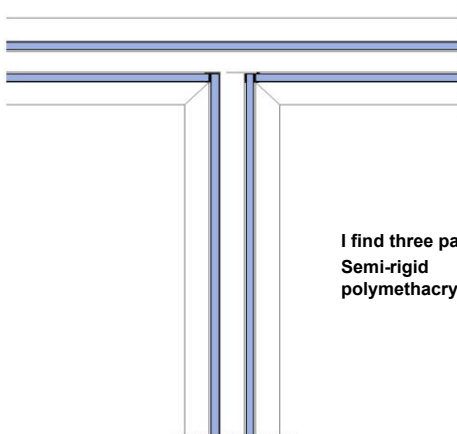
**BLIND MODULES AND
CRYSTAL MODULES**

Sections set

90° - 180° Joints



I find three tracks with a vertical
aluminum profile

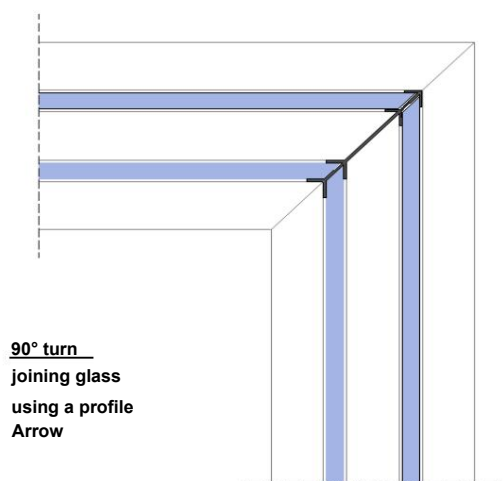
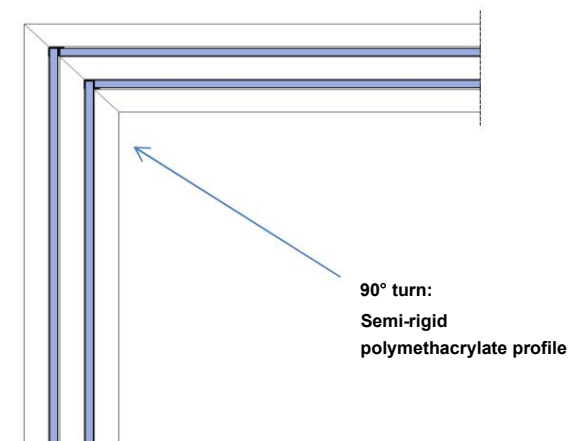
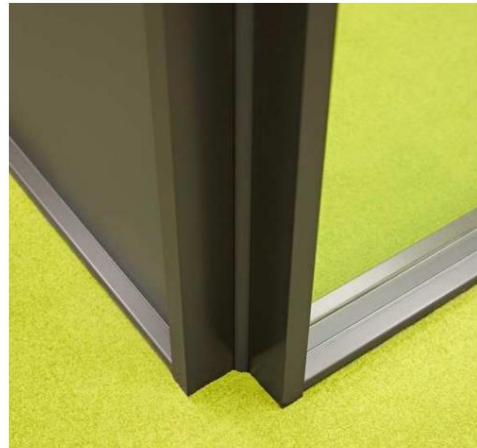
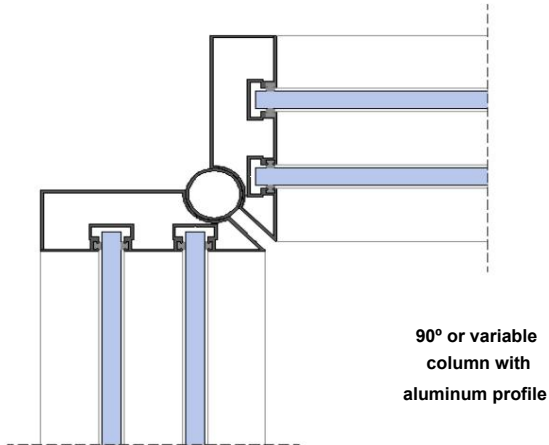


I find three paths:
Semi-rigid
polymethacrylate profile



TECHNICAL DETAILS DUPLO MODEL

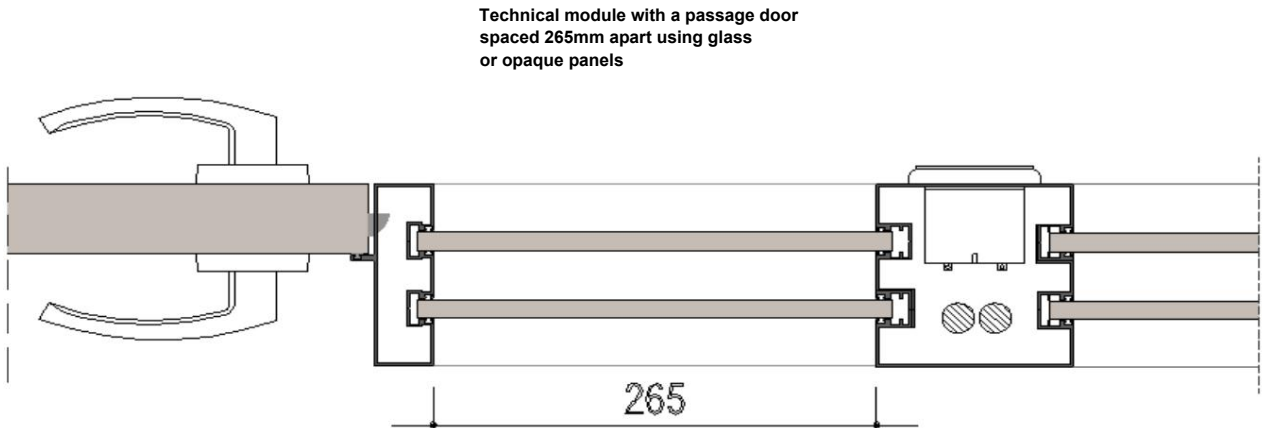
Sections set
90° Joints



TECHNICAL DETAILS SINGLE AND DUPLO MODELS

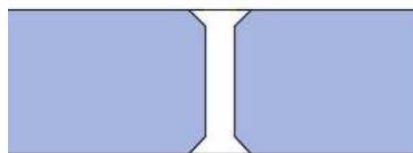
Sections set

Technical profile



Detail

Union between crystals



**FLUSH SEMI-RIGID PROFILE
POLYMETHACRYLATE**

HARDWARE

ELITE HANDLE (blind door)



ELITE HANDLE (glass door)



HINGES



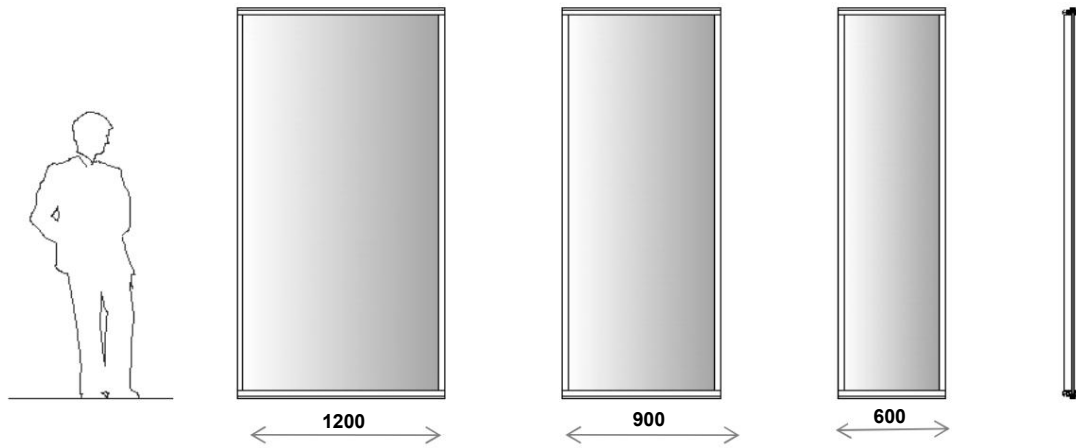
**GLASS LEAF HINGE
TOTAL HEIGHT**



**GLASS LEAF HINGE WITH FIXED SECTION
SUPERIOR**

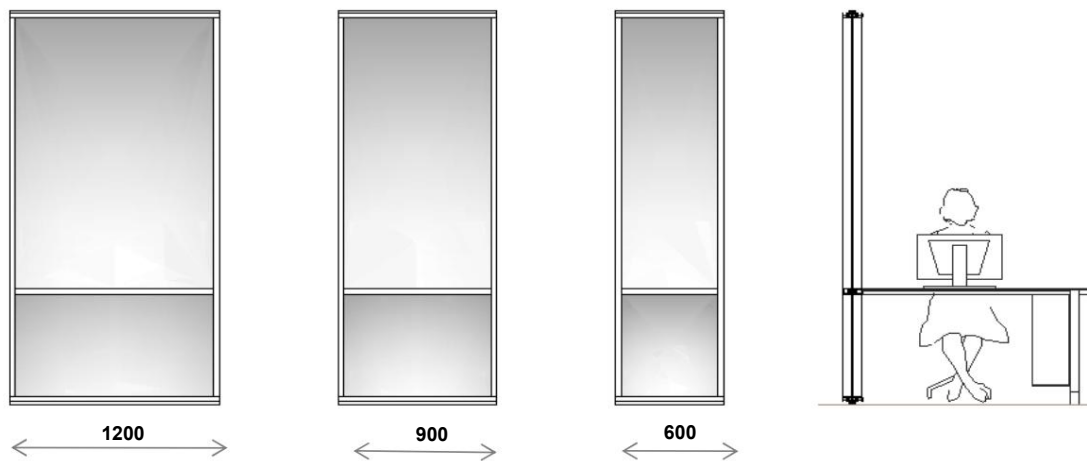
SINGLE MODULE

BLIND FLOOR-CEILING MODULE with perimeter framing
Code EE11SC01



NOTE: Maximum height 2800mm

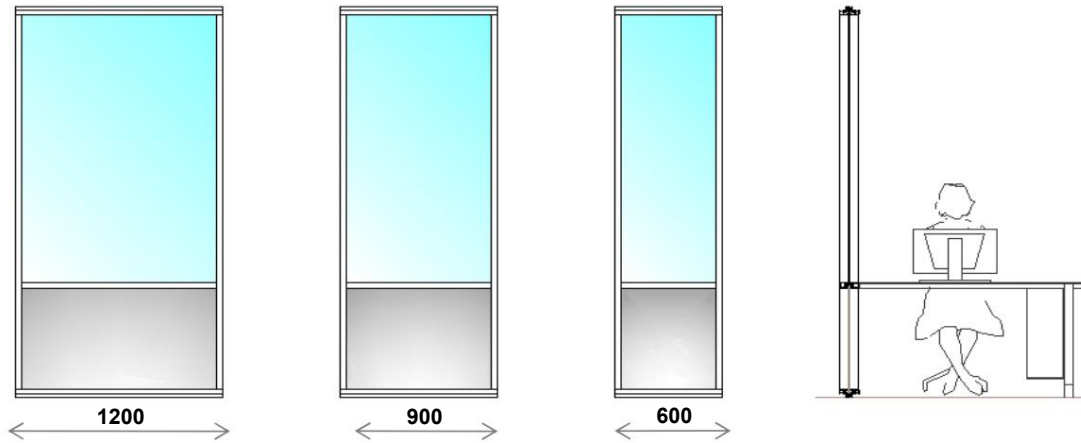
FLOOR-TO-CEILING BLIND MODULE with perimeter framing and crossbar, 73.5cm high
Code EE11SC02



SINGLE MODULE

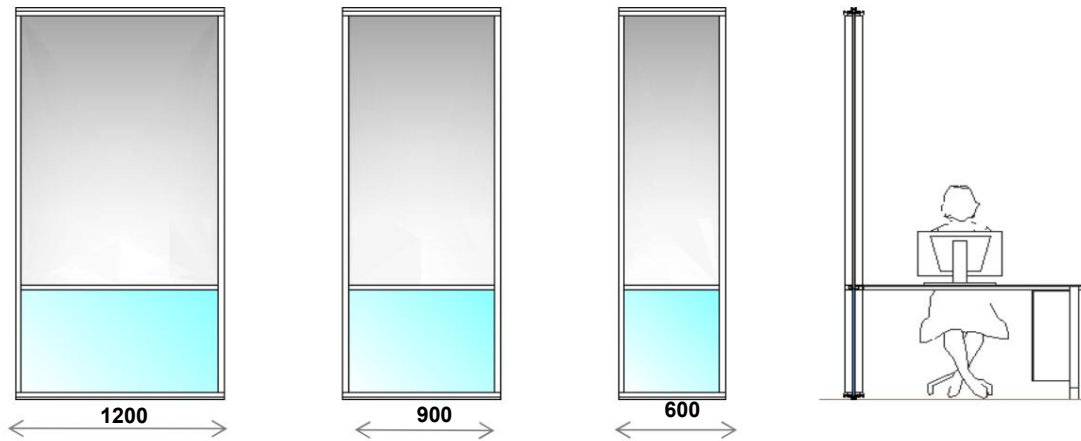
USUAL COMBINED MODULE with perimeter frame and crossbar, height 73.5cm

Code EE11S07



REVERSE COMBINED MODULE with perimeter frame and crossbar, height 73.5cm

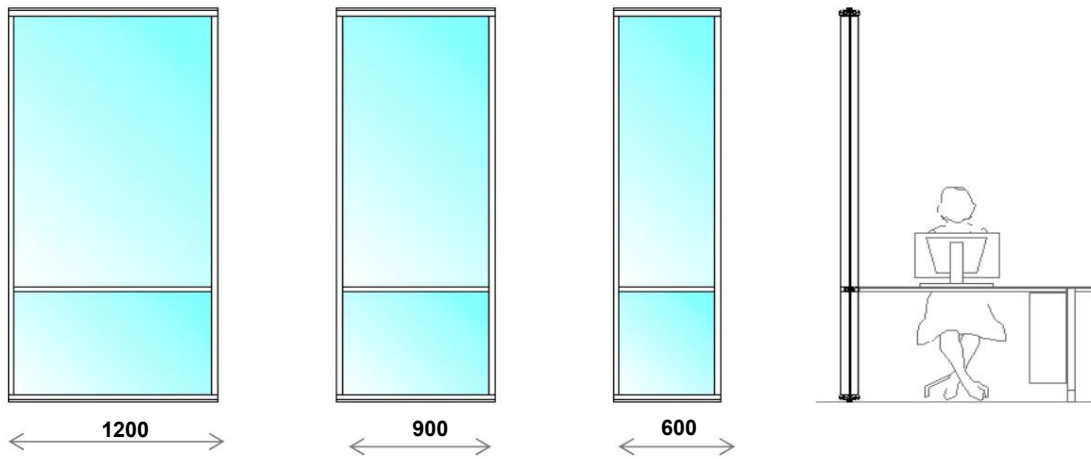
Code EE11S14



SINGLE MODULE

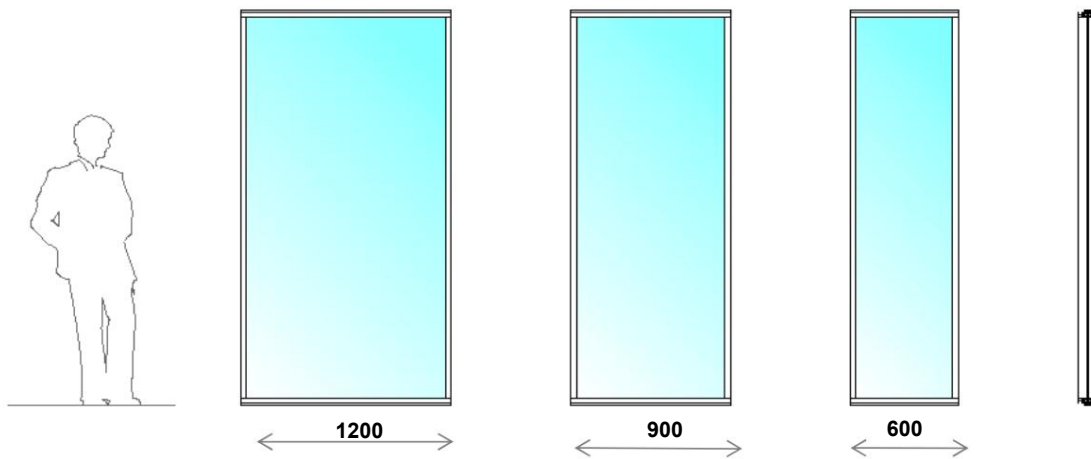
CRYSTAL MODULE with perimeter frame and crossbar, height 73.5cm

Code EE11S08



FLOOR-CEILING GLASS MODULE with perimeter framing

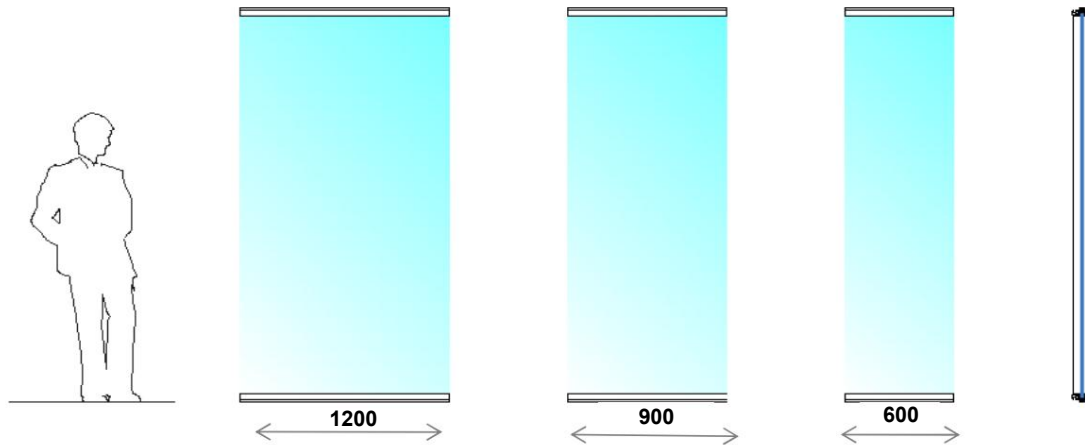
Code EE11S11



SINGLE MODULE

FLOOR-CEILING GLASS MODULE, with transparent polycarbonate joints between glass panels

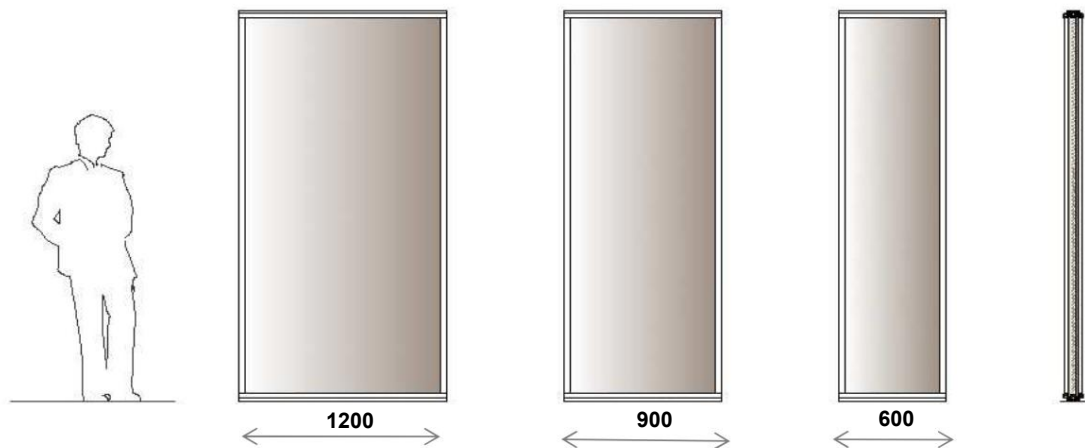
Code EE11SH11



DUPLO MODULE

BLIND FLOOR-CEILING MODULE, with perimeter framing

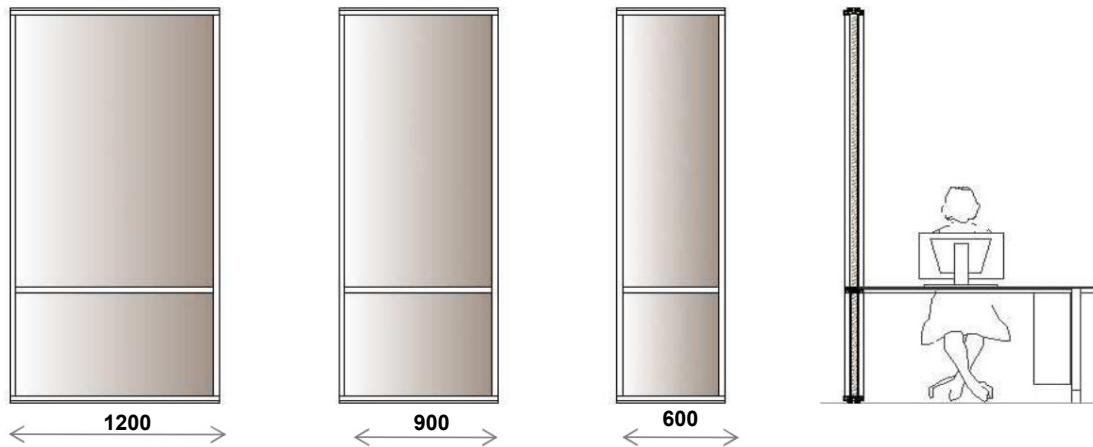
Code EE11DC01



DUPLO MODULE

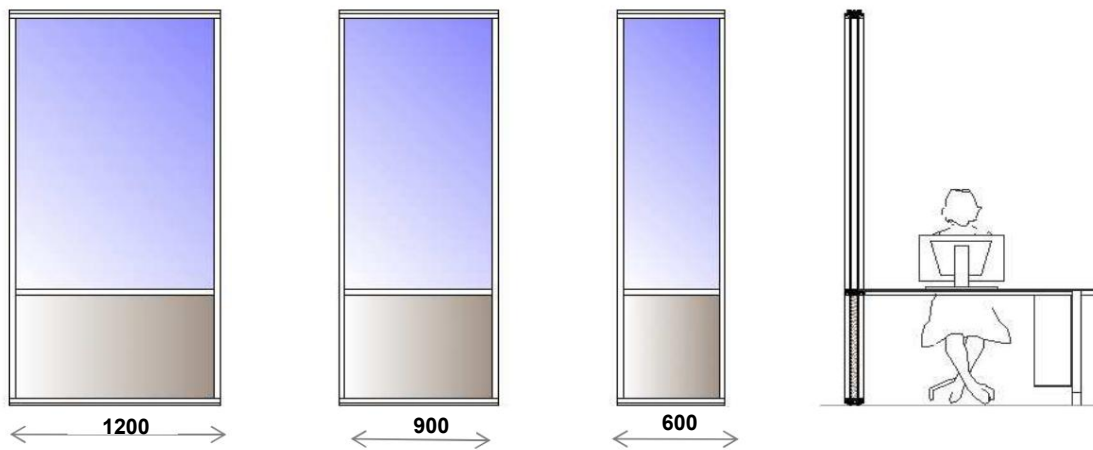
FLOOR-TO-CEILING BLIND MODULE with perimeter framing and crossbar, 73.5cm high

Code EE11DC02



USUAL COMBINED MODULE with perimeter frame and crossbar, height 73.5cm

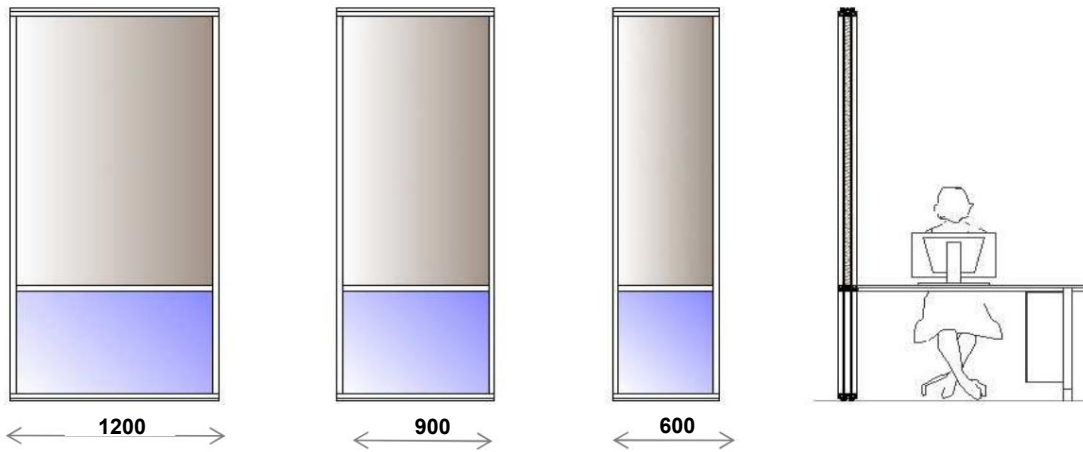
Code EE11D07



DUPLO MODULE

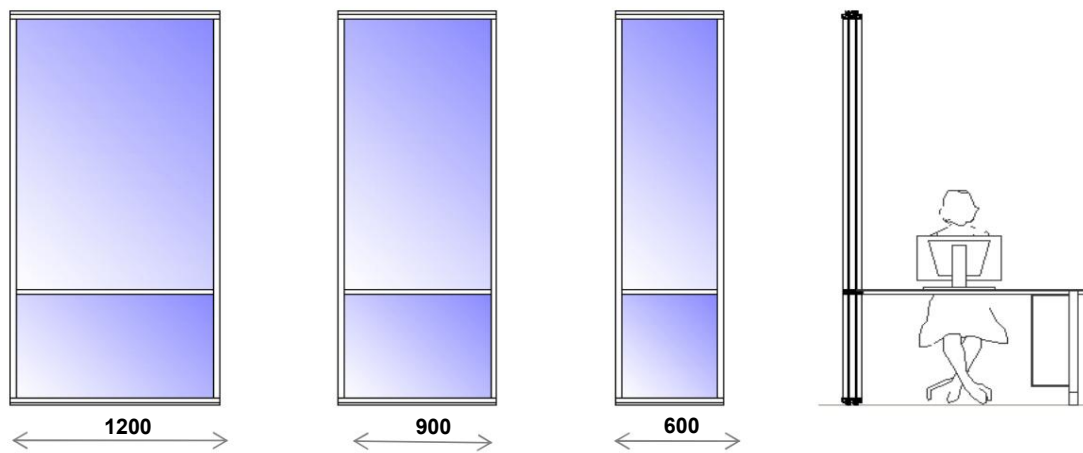
REVERSE COMBINED MODULE with perimeter frame and crossbar, height 73.5cm

Code EE11D14



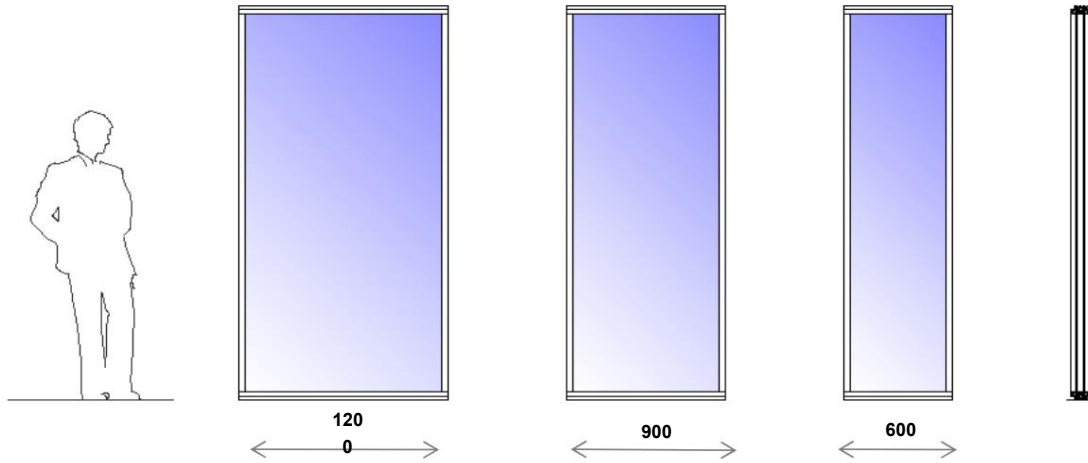
CRYSTAL MODULE with perimeter frame and crossbar, height 73.5cm

Code EE11D08

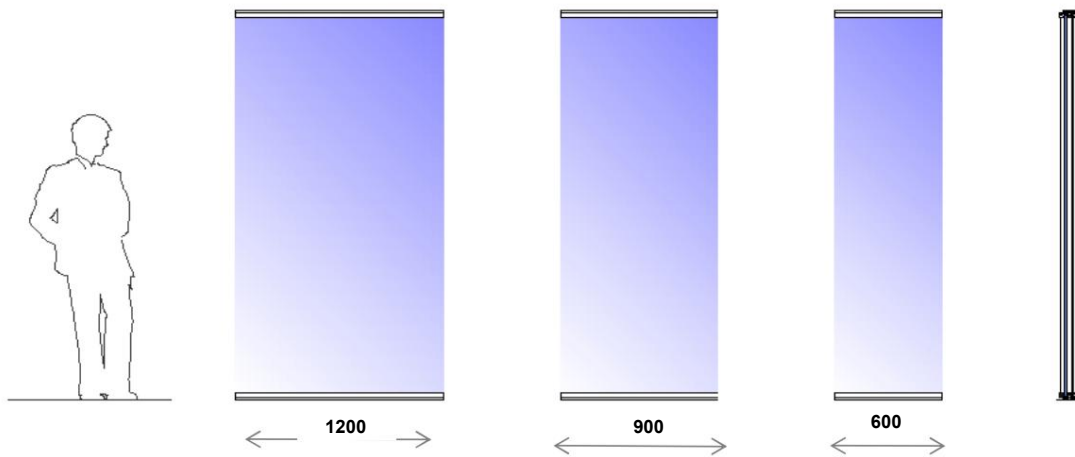


DUPLO MODULE

FLOOR-CEILING GLASS MODULE with perimeter frame Code EE11D11



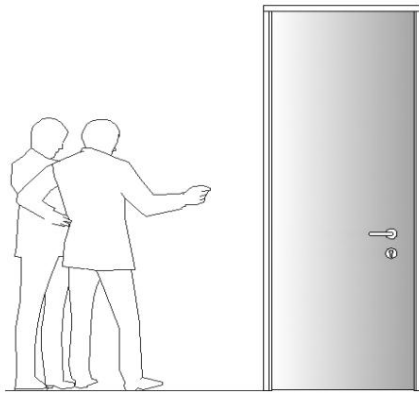
FLOOR-CEILING GLASS MODULE, with transparent polycarbonate joints between glass panels. Code EE11DH11



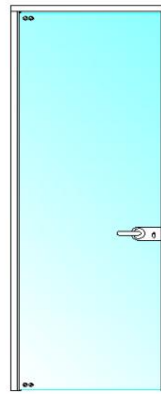
PASSAGE MODULE

FLOOR-TO-CEILING DOORS IN SOLID AND GLASS

MAXIMUM HEIGHT 2800mm



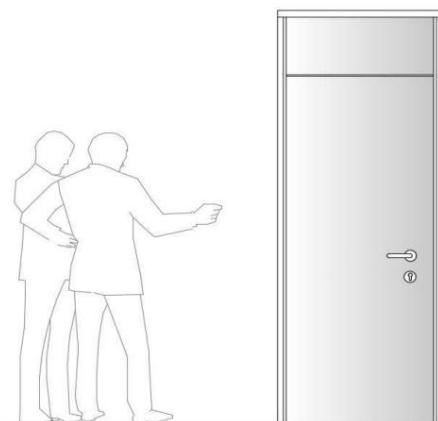
Code EE11P902



Code EE11P907



DOORS WITH FIXED UPPER PANEL IN SOLID AND GLASS



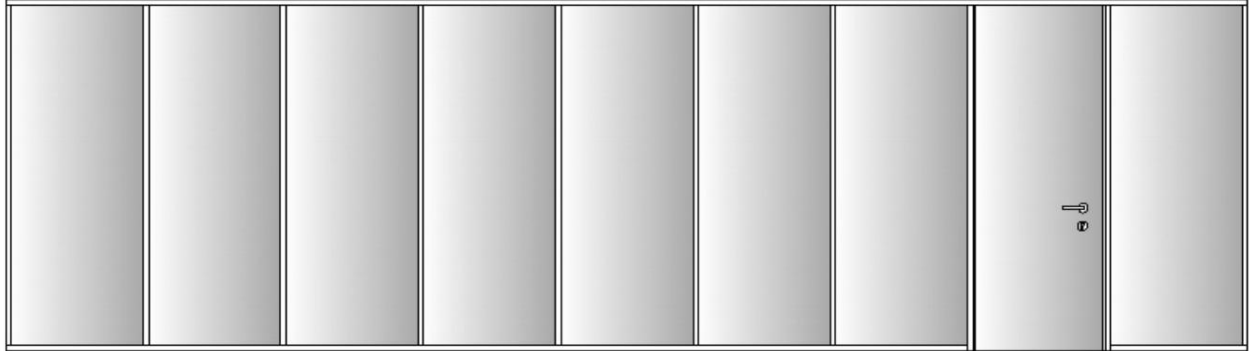
Code EE11P902



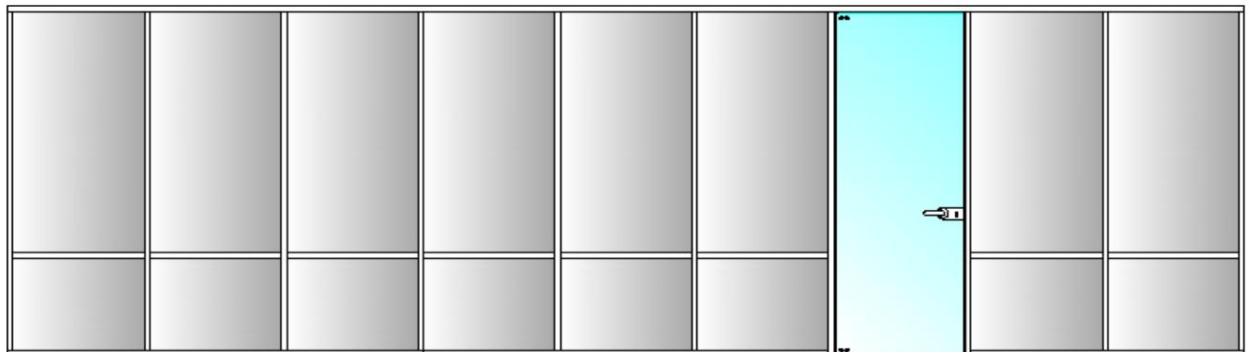
Code EE11P908

STATIC DESIGN (FOR SINGLE AND DUPLO MODELS)

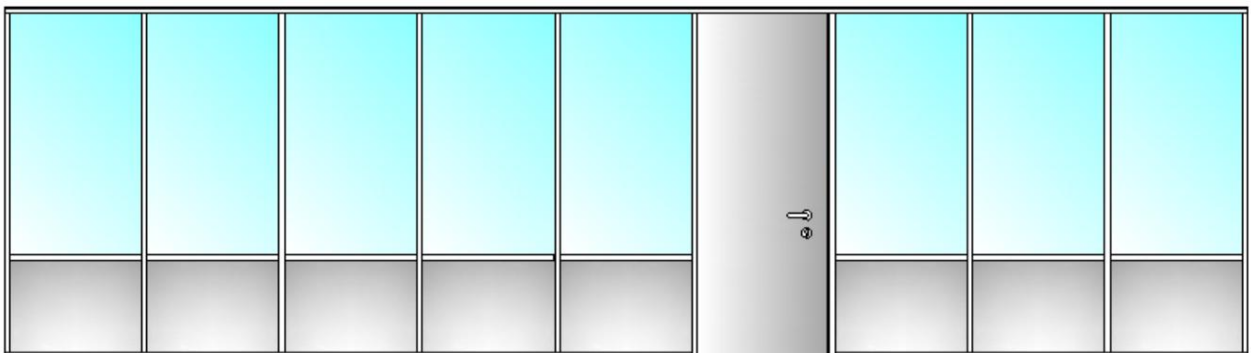
BLIND FLOOR-CEILING MODULE with perimeter framing
Distance between frames 900mm



BLIND FLOOR-CEILING MODULE with perimeter framing and crossbar, height 73.50cm
Distance between frames 900mm



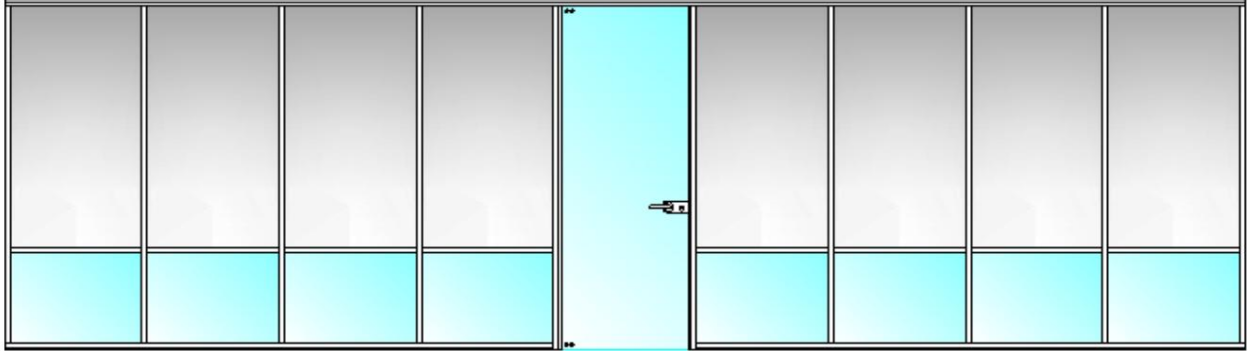
USUAL COMBINED MODULE with perimeter frame and crossbar, height 73.50cm
Distance between frames 900mm



STATIC DESIGN (FOR SINGLE AND DUPLO MODELS)

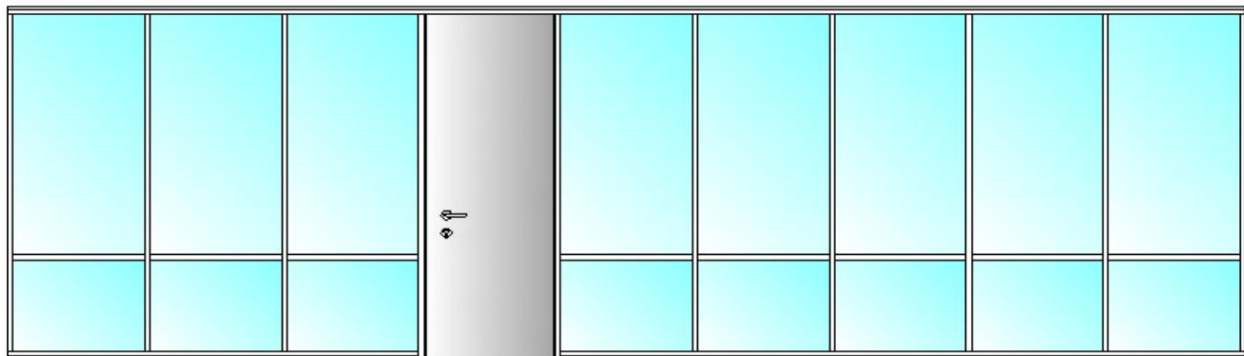
REVERSE COMBINED MODULE with perimeter frame and crossbar, height 73.5cm

Distance between frames 900mm



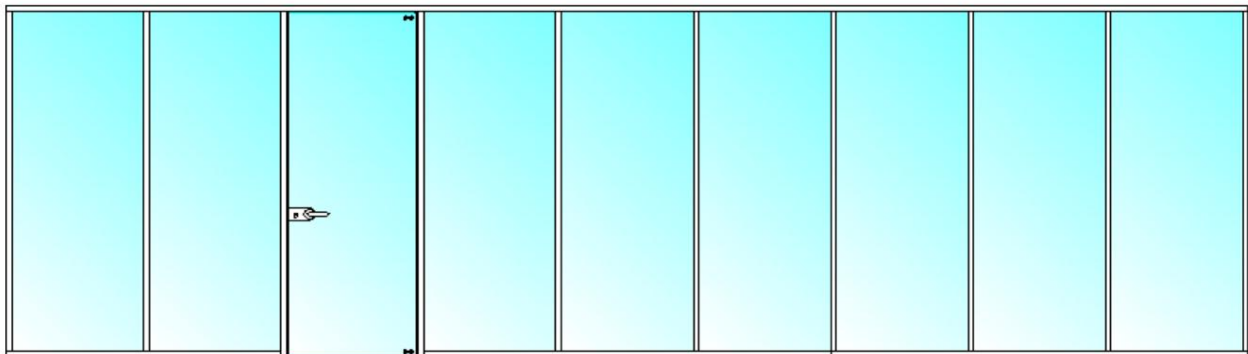
CRYSTAL MODULE with perimeter frame and crossbar, height 73.5cm

Distance between frames 900mm



FLOOR-CEILING GLASS MODULE with perimeter framing

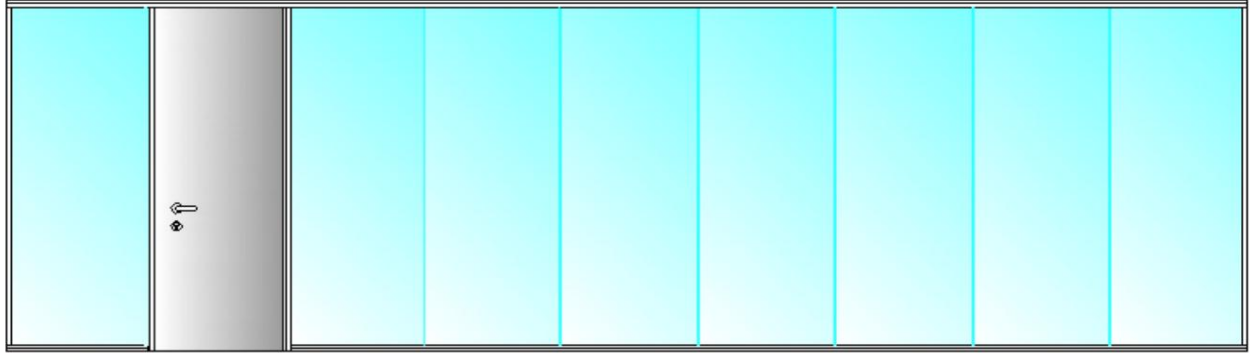
Distance between frames 900mm



STATIC DESIGN (FOR SINGLE AND DUPLO MODELS)

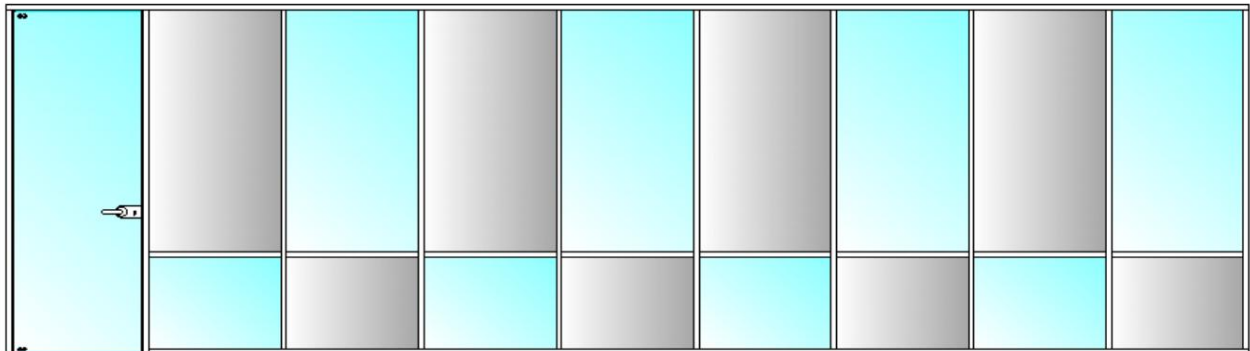
FLOOR-CEILING GLASS MODULE, with transparent polycarbonate joints between glass panels

Distance between polycarbonate 900mm



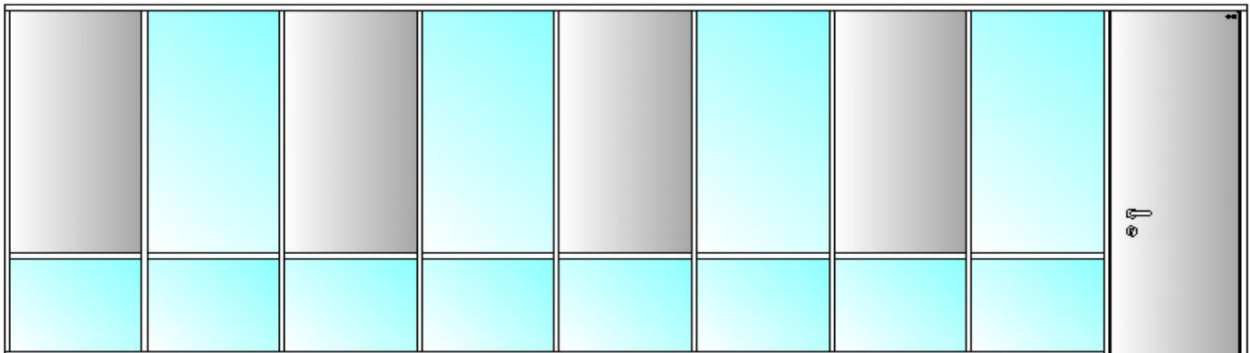
ZIG-ZAG COMPOSITION

Distance between frames of 900mm



ON-OFF COMPOSITION

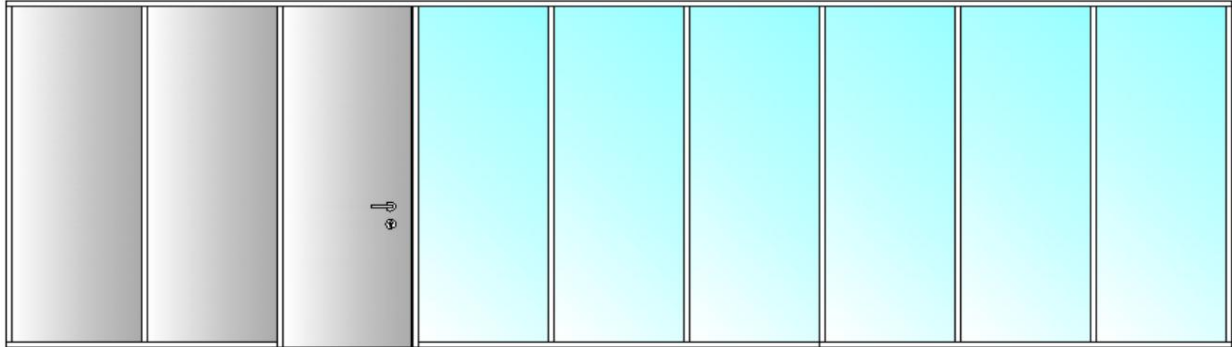
Distance between frames of 900mm



STATIC DESIGN (FOR SINGLE AND DUPLO MODELS)

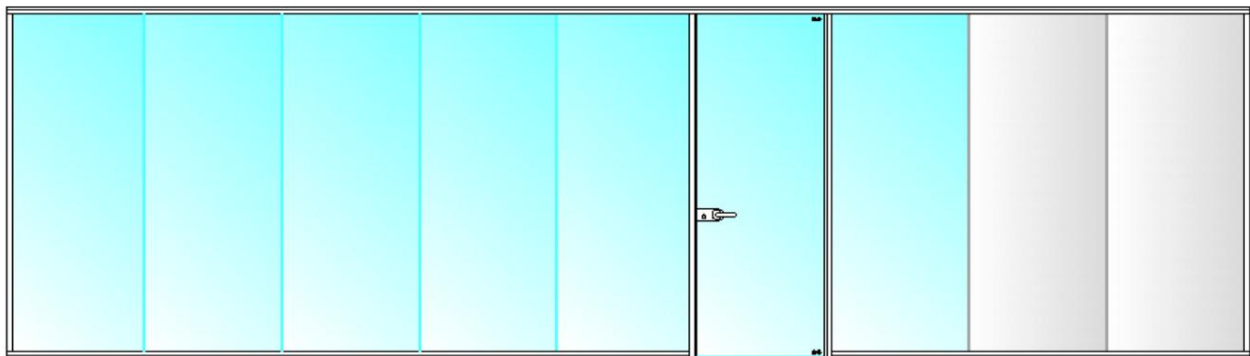
BLIND AND GLASS MODULE, depending on the need for transparency or opacity

Distance between frames 900mm



FLOOR-CEILING CRYSTAL MODULE, according to the need for transparency or opacity

Distance between polycarbonate 900mm

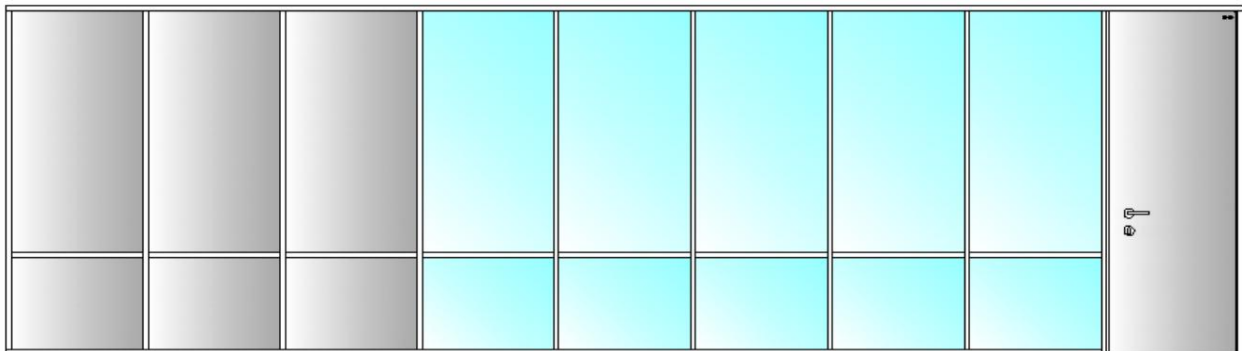


NOTE: Opacity can be achieved using colored opaque glass or vinyl.

Blind and glass floor-to-ceiling module with perimeter framing and crossbar, height 73.50cm

Depending on the need for transparency or opacity

Distance between frames 900mm



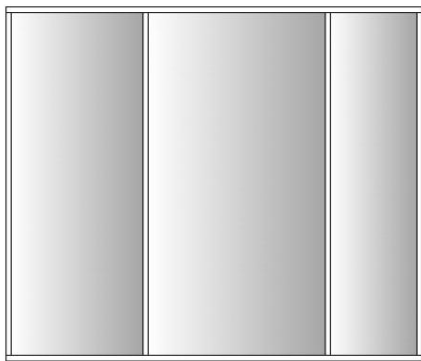
DYNAMIC DESIGN (FOR SINGLE AND DUPLO MODELS)

Dynamic Module: compositions 2700mm wide with a fixed sequence of 900 - 1200 - 600mm distance between frames.

Depending on needs and space layouts, the doorway module (solid or glass) will occupy the space of the 900mm module

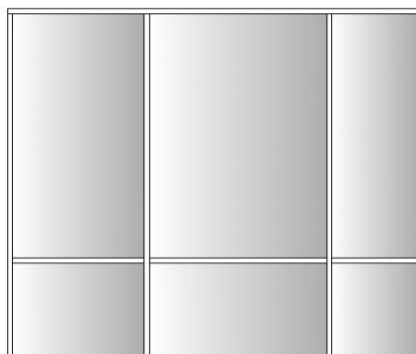
COMPOSITION 1 (Blind module from floor to ceiling - EE11SC01 / EE11DC01)

Module of 2700mm x h.work - Distance between frames 900-1200-600mm



COMPOSITION 2 (Blind module with crossbar - EE11SC02 / EE11DC02)

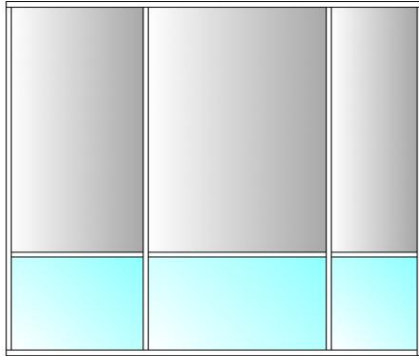
Module of 2700mm x h.work - Distance between frames 900-1200-600mm



DYNAMIC DESIGN (FOR SINGLE AND DUPLO MODELS)

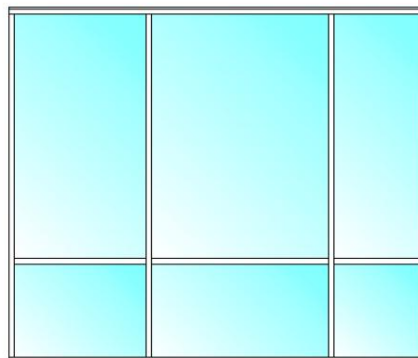
COMPOSITION 3 (Inverse Combined Module)

Module of 2700mm x h.work - Distance between frames 900-1200-600mm



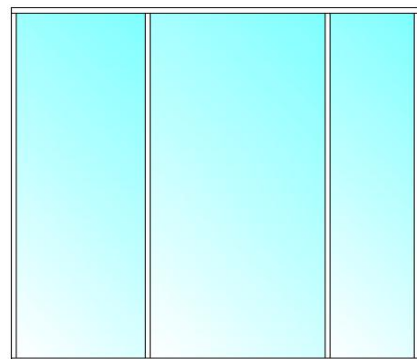
COMPOSITION 4 (Crystal module with crossbar - EE11S08 / EE11D08)

Module of 2700mm x h.work - Distance between frames 900-1200-600mm



COMPOSITION 5 (Floor-ceiling glass module - EE11S11 / EE11D11)

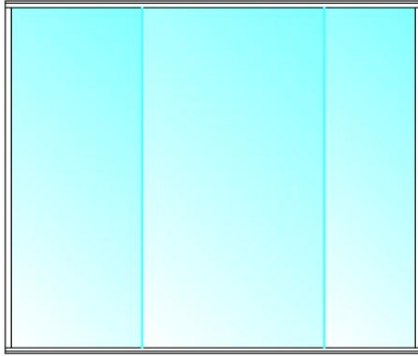
Module of 2700mm x h.work - Distance between frames 900-1200-600mm



DYNAMIC DESIGN (FOR SINGLE AND DUPLO MODELS)

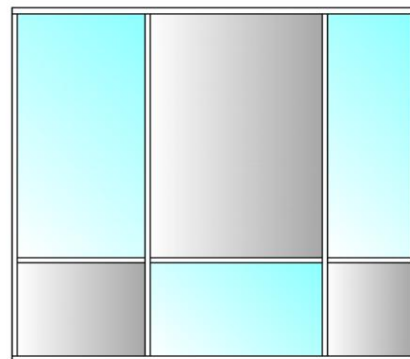
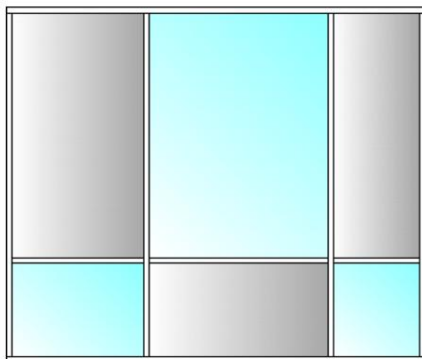
COMPOSITION 6 (Frameless floor-to-ceiling glass module - EE11SH11 / EE11DH11)

Module of 2700mm x h.work - Distance between frames 900-1200-600mm



COMPOSITION 7 (ZIG-ZAG MODULE COMPOSITION)

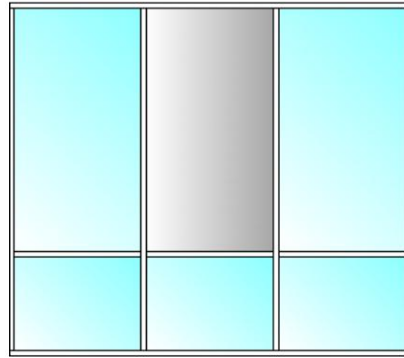
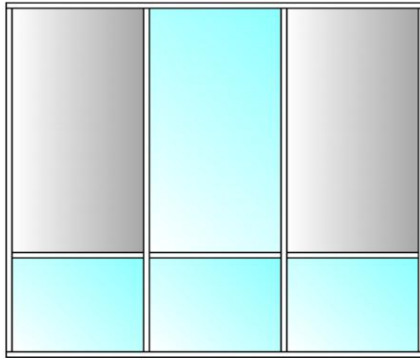
Module of 2700mm x h.work - Distance between frames 900-1200-600mm



DYNAMIC DESIGN (FOR SINGLE AND DUPLO MODELS)

COMPOSITION 8 (ON-OFF module composition)

Module of 2700mm x h.work - Distance between frames 900-1200-600mm



ELITE DETAILS by Francesc Rifé



Signed: PRODUCTION	Commercial Signature	Signed: TECHNICAL OFFICE
DATE	DATE	DATE